

PRODUCT BULLETIN

OCTOBER 2016

NEW!

Three-Piece Couplings

Gibson Stainless has redesigned and expanded its Three-Piece Coupling product line.

Three-piece couplings are used to join and connect the threaded ends of rigid conduit where the conduit cannot be turned. Using three-piece couplings allows for future modifications to the conduit system without full disassembly.

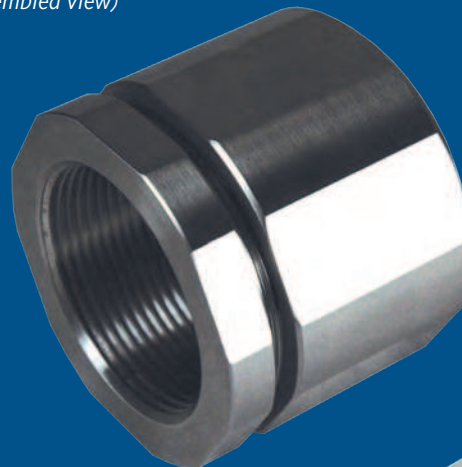
Gibson Stainless manufactures these fittings entirely in Type 316 SS. Sizes 1/2" - 2" are now offered.

In Stock Now and Available for Immediate Shipment.

**FOR MORE INFORMATION
CALL 1.800.945.4316
OR YOUR LOCAL REP**

2" Size

(assembled view)



1/2" Size

(disassembled view)